

Block Up-Converter (BUC)

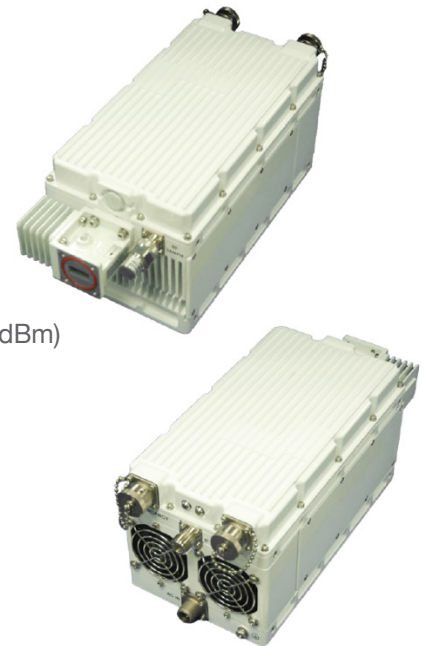
Ku-Band 100/120W

Reliability

- Highly integrated RF technologies (RFIC and GaN)
- Designed for high volume production
- Linearity optimized for high order modulation and high data rate
- Strict quality control processes resulting in <0.25% field failure rates

Product Features

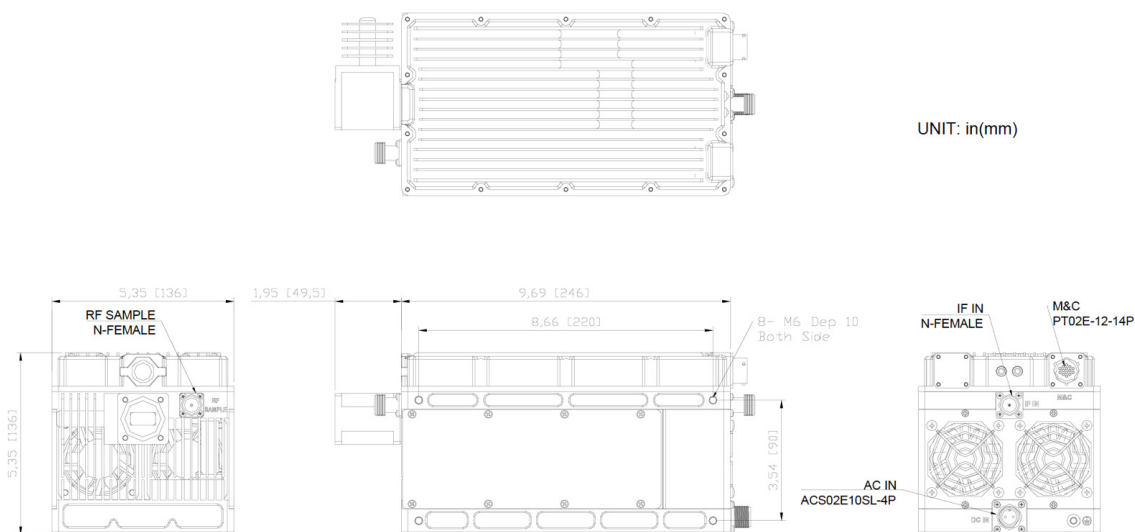
- Variable power consumption; **100W**: 650W (@49dBm) **120W**: 750W (@50dBm)
- Optional equipment redundancy configurations
- Low phase noise (exceeds IESS308/309)
- Rugged design for extreme environments (-40 to +65°C)



Typical VSAT Applications

- Maritime
- 5G Backhaul
- SNG Vehicle
- Terminals: Fixed / Portable / Transportable

Mechanical Diagram (Unit: inch (mm))



Block Up-Converter (BUC)

Ku-Band 100/120W

RF Specifications

	Standard	Extended
RF Frequency	14-14.50 MHz	13.75-14.50 GHz
IF Frequency	950-1450 MHz	950-1700 MHz
External Reference	10 MHz, 0 ± 5 dBm	
Output Power	100W	120W
Saturated	50 dBm	50.8 dBm
PLin ¹	49 dBm	49.8 dBm
PLin ²	48 dBm	48.8 dBm
PLin ³	47 dBm	47.8 dBm
IMD3 (33dBm)	-25 dBc	
Small Signal Gain	-75 dBc	
Gain Variation	1 dB p-p / 36 MHz	
	3 dB p-p / 500 MHz	
	4 dB p-p / 750 MHz	
Gain stability	3 dB p-p	
Gain Adjustment	20 dB (Step: 0.5 dB)	
Phase Noise	-65 dBc / Hz @ 100 Hz	
	-75 dBc / Hz @ 1 KHz	
	-85 dBc / Hz @ 10 KHz	
	-95 dBc / Hz @ 100 KHz	
Output Spurious	-60 dBc	

Notes:

PLin¹: 26 dBc regrowth, 1.5 SR (commercial satellite)

PLin²: -30 dBc regrowth, 1.0 SR (MIL-STD-188-164B, one-carrier)

PLin³: <-25 dBc IMD3 (MIL-STD-188-164B, two-carrier)

Power Supply

Input Power	85 to 265 VAC (47-63 Hz)	
Power Consumption	100W	120W
@ PLin ¹ Output	500W	570W
@ Rated Output	550W	620W

Interfaces

RF Output Connector	WR75-G (Grooved)
RF Output VSWR	1.25:1
IF Connector	N-Type Female
IF Input VSWR	1.5:1
Power Connector	ACS02E-14S-7P
M&C Connector	PT02E-12-14P (RS485/ RS232/Eth) SNMPv2
Redundancy Connector	PT02E-12-14S
Alarm Status Indicator	LED (green/red)

Physical Parameters

Size	(Inches)	9.7*5.3*5.3
	(mm)	246*136*136
Weight	(lbs)	12.5
	(kg)	5.7
Operating Temperature	-40 to +60°C (guarantee)	
Humidity	0-100% (condensing)	
Altitude	0-10,000 feet ASL	

Block Up-Converter (BUC)

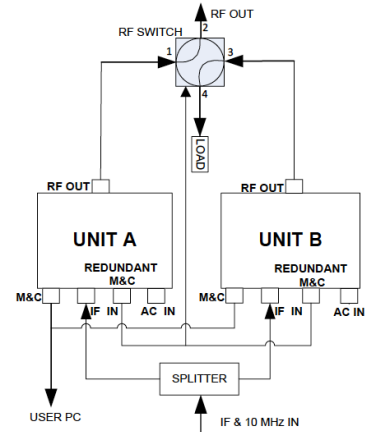
Ku-Band 100/120W

Mechanical Diagram (Unit: inch (mm))

Optional 1:1 Redundancy Configuration

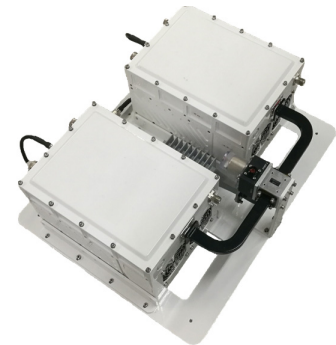
In the event of an equipment failure, the optional 1:1 redundancy kit switches traffic from the primary BUC to the standby BUC.

- Compatibility: **100 and 120, BUCs**
- Switching Function: **Auto or Manual**
- Type of Standby: **Cold-backup**
- Rugged design for extreme environments



Items Included in Kit

- WR-75 waveguide switch
- WR-75 Hi Power Load
- Splitter
- Interconnection cabling
- Mounting Frame x1



Mechanical Diagram (Unit: inch (mm))

