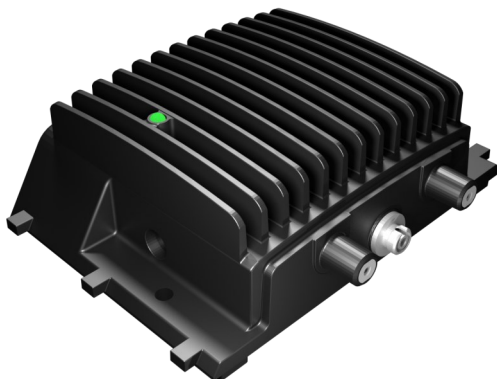


- Optical to RF convertor (Satellite and FM,DAB,DTT)
- Compatible with SKY Q, EN50494, EN50607, SKY SCR
SKY Classic/Legacy
- Automatic Gain Control (AGC)
- LED Status indication for diagnostics
- Discrete stylised design for home installs



The dSCR GTU converts optical power to RF power (4 satellite bands and FM,DAB,DTT). Terrestrial signals are overlaid onto both output ports. All units have built in AGC which allows a wide dynamic range of optical levels without affecting output power and quality. One LED indicator allows the user to monitor the status of the unit. Able to work in legacy, analogue SCR (aSCR) and digital SCR (dSCR) modes.



Technical Specifications

Product Part No.

dSCR GTU	D000199
----------	---------

Satellite (Electrical)

Parameter	Min	Max	Notes
RF frequency range (MHz)	950	2150	
Output impedance	75Ω		
Return loss	10dB		
Gain variation across band		10dB	
Nominal output level (Legacy)	75dBμV *		
Nominal output level (dSCR)	72dBμV		
Terrestrial rejection	35dB		

* additional variation can occur due to satellite transmitted signal levels.

Fibre Integrated Reception System

DTT, DAB & FM (Electrical)			
Parameter	Min	Max	Notes
RF frequency range			
DTT	470-790MHz		
DAB	174-240MHz		
FM	88-108MHz		
Nominal impedance	75Ω		
Return loss	8dB		
Nominal DTT output	71dBμV		For 6 multiplexes
Gain variation across band		5dB	
950-2150MHz rejection	35dB		

FM,DAB,DTT & Satellite (Optical)			
Optical wavelength	1100nm to 1650nm		
Optical input power (typical)	-12dBm [#]	-3dBm	[#] For systems with 19.2dB optical budget

Control signals (Legacy only)			
Vertical select voltage	11.5V	14.0V	13V nominal
Horizontal select voltage	16V	19V	18V nominal
Low / High band	0/22KHz tone		

DC specification			
Input voltage	20V		
Current consumption	430mA max		

Connectors	
Output	F x 2
Power supply	2.1mm Jack
Optical input	FC/PC

Environmental Specification	
Operating temperature	0°C to +50°C
Storage temperature	-40°C to +70°C

Standards	
Cenelec	EN 50607
Cenelec	EN 50494

Optical cabling	
Fibre type	Single mode
Standard	GI - approved G657a

Dimensions	
Size (W x H x D)	134mm x 105mm x 43mm excluding plastics (136mm x 135mm x 46mm inc plastics)
Weight	450g excluding PSU

**Global Invacom will only support systems that are installed using
FibreIRS™ approved fibre cabling & system components**

Note: Specifications subject to change without notice