



GPS 2 WAY PASSIVE SPLITTER

G-SP2/PN-DC1

Description

The Global Professional GPS PASSIVE 2 way Splitter has been designed to allow the signal from a GPS antenna to be shared between two receivers.

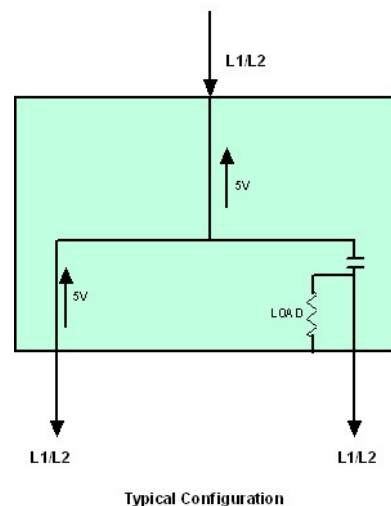
The unit is configured to pass the 5v DC from port one receiver through to the antenna port. The second port incorporates a 200 Ohm DC load to simulate an antenna dc current draw.



Specifications

Frequency Pass	L1 1575.42MHz L2 1227.60 MHz
Noise figure	2.5dB
Port to port isolation	>20dB
Through Loss	4dB
DC Input (Port one)	5 Volt
Connectors	'N' type as standard 50 Ohm
Dimensions	90mm x 80mm x 30mm
Mounting Dimensions	78mm x 32.5mm
Weight	250 grams
RoSH/WEEE Compliant	YES

GPS Antenna



Other Connector configurations available upon request.

GPS